



# GAT MONTHLY MEMBERSHIP PROGRESS REPORT

Results as of: 5/31/2023

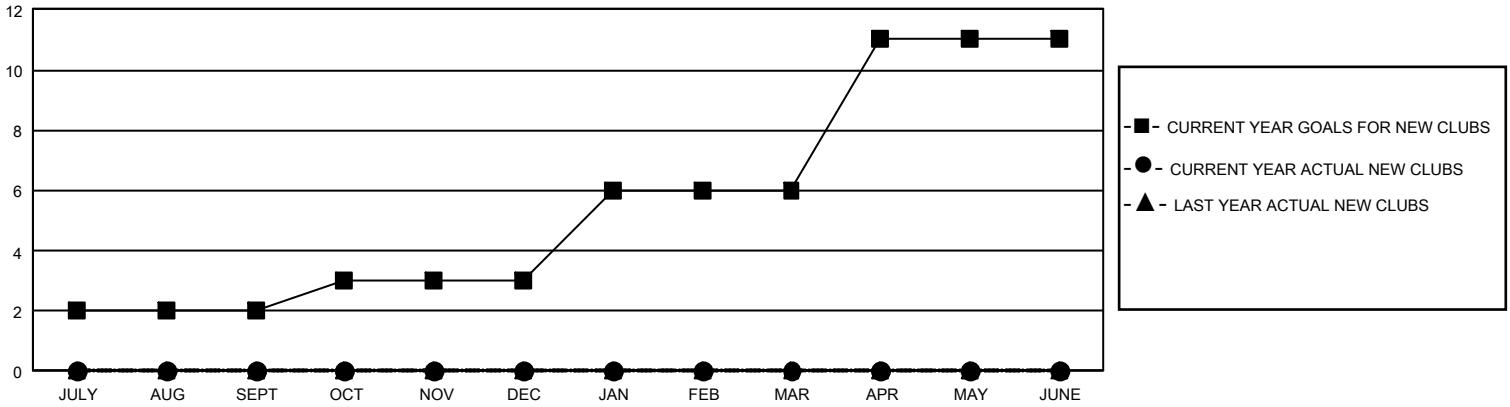
## GMT Constitutional Area 5 - C, Group A

REPORT DOES NOT INCLUDE CLUBS IN UNDISTRICTED AREAS.

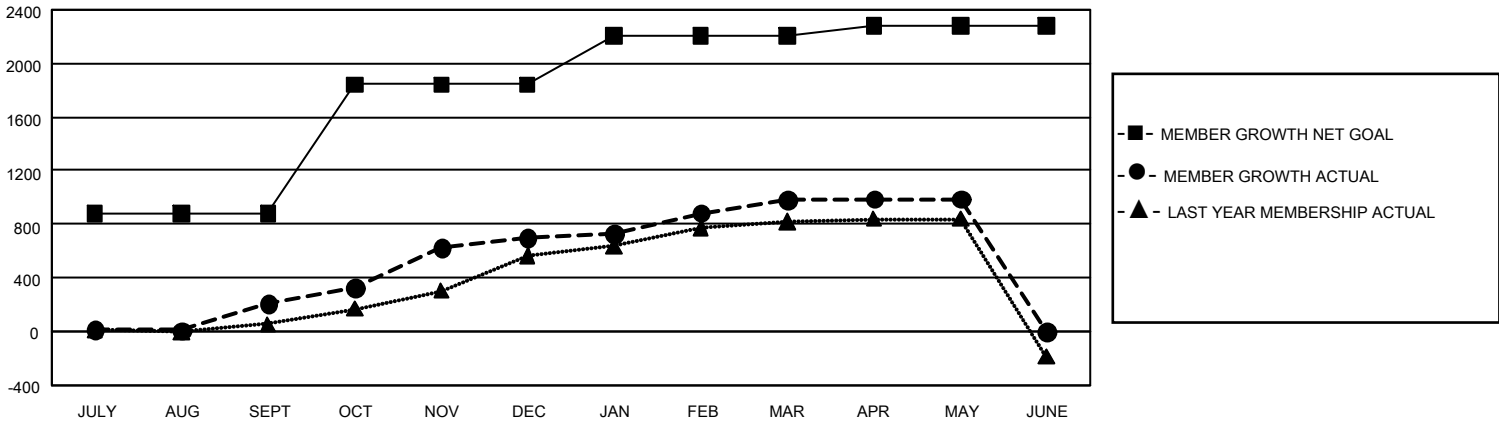
Clubs			
RESULTS FOR 2022-2023			
QUARTER	NEW CLUB GOAL	NEW CLUBS	DROPPED CLUBS
JULY/AUG/SEPT	6	0	0
OCT/NOV/DEC	3	0	0
JAN/FEB/MAR	9	0	0
APR/MAY/JUNE	15	0	0

Members			
RESULTS FOR 2022-2023			
QUARTER	MEMBER GROWTH NET GOAL	MEMBER GROWTH ACTUAL	DROPPED MEMBERS ACTUAL (including transfers)
JULY/AUG/SEPT	881	273	34
OCT/NOV/DEC	961	640	78
JAN/FEB/MAR	364	335	32
APR/MAY/JUNE	75	58	32

GOALS AND ACTUAL NEW CLUBS CUMULATIVE



GOALS AND ACTUAL MEMBERS CUMULATIVE



DROPPED CLUBS: 0	240 CLUBS OF 339 ADDED 1 OR MORE NEW MEMBERS	<u>GENDER DISTRIBUTION</u>	
<u>DROPPED MEMBERS</u>		MALE	4,961 (61.07%)
DECEASED	1	FEMALE	3,163 (38.93%)
CLUB CANCELLED	0	NON BINARY	0 (0.00%)
OTHER	175	PREFER NOT TO ANSWER	0 (0.00%)
TOTAL	176	TOTAL FAMILY UNIT MEMBERS	508
	<a href="#">CLICK HERE FOR CUMULATIVE MEMBERSHIP DATA</a>	FAMILY MEMBERS PAYING HALF DUES	257